

A scenic view of a traditional Japanese garden. In the center, a multi-tiered red pagoda stands amidst lush greenery. To the right, a waterfall cascades down a rocky ledge. The background is filled with tall, dark green trees under a clear sky. The overall atmosphere is peaceful and natural.

# KURIBARA ECO JAPANTOWN PROJECT DEVELOPMENT IN CAMBODIA

---

7,000 HECTARS IN KAMPONG SPEU  
CAMBODIA

**SITE PROPOSED**



WE CONVERT  
7,000 HECTARES FARM LAND  
INTO MODERN  
KURIBARA ECO JAPANTOWN

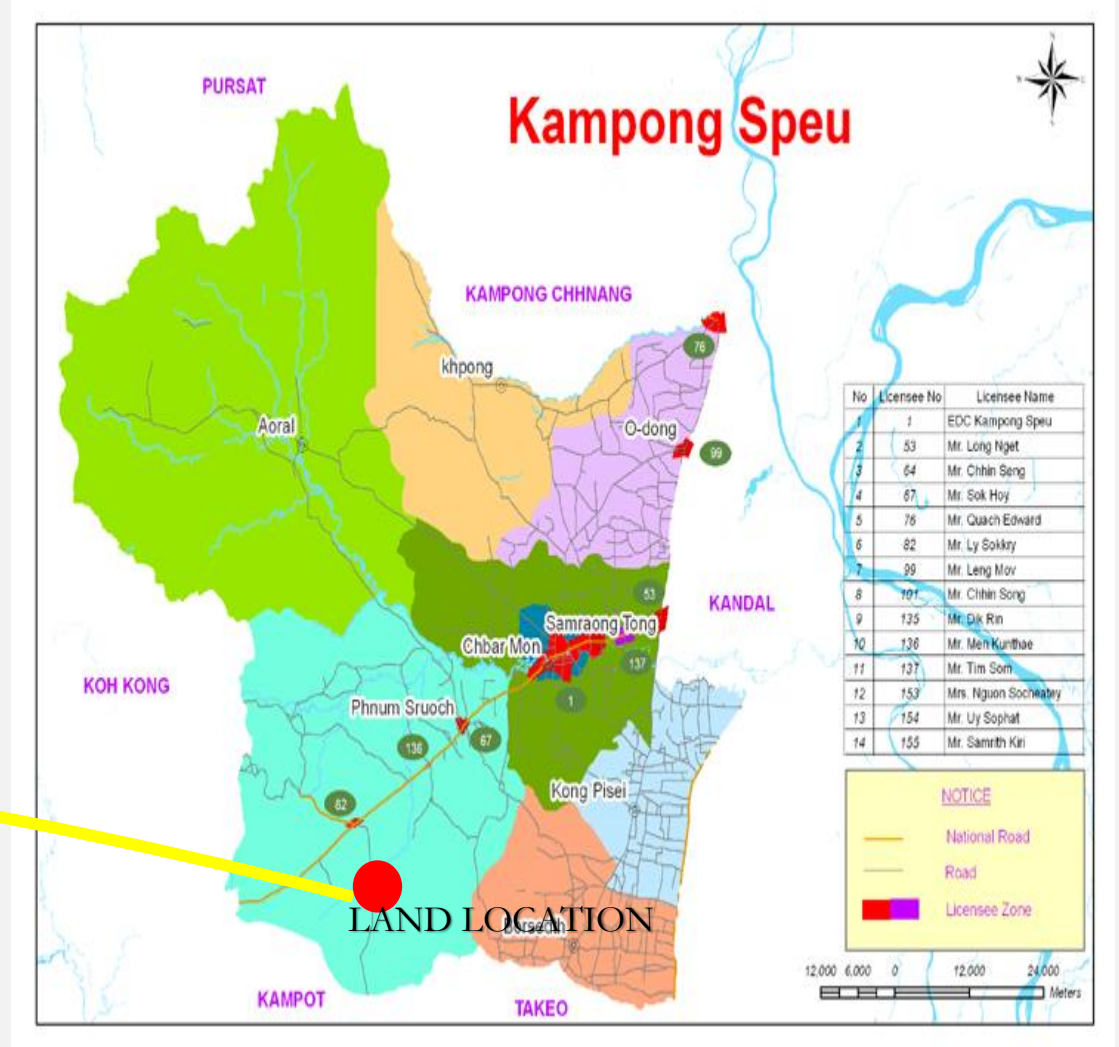
LAND DEVELOPMENT SHALL  
INCLUDE:

- ▶ Luxury Home & Affordable homes
- ▶ Commercial Area
- ▶ Fruit Farming and Greenhouse
- ▶ Hospital and Nursing home center
- ▶ Livestock Farming
- ▶ Agriculture farming
- ▶ Sport Club, Golf Club, biking and hiking trails
- ▶ Banking, Tour travel services
- ▶ Mini Mall, and Market
- ▶ Social Area including clubs, bars, restaurants, boutiques and wellness center.,
- ▶ Community Park, Golf course

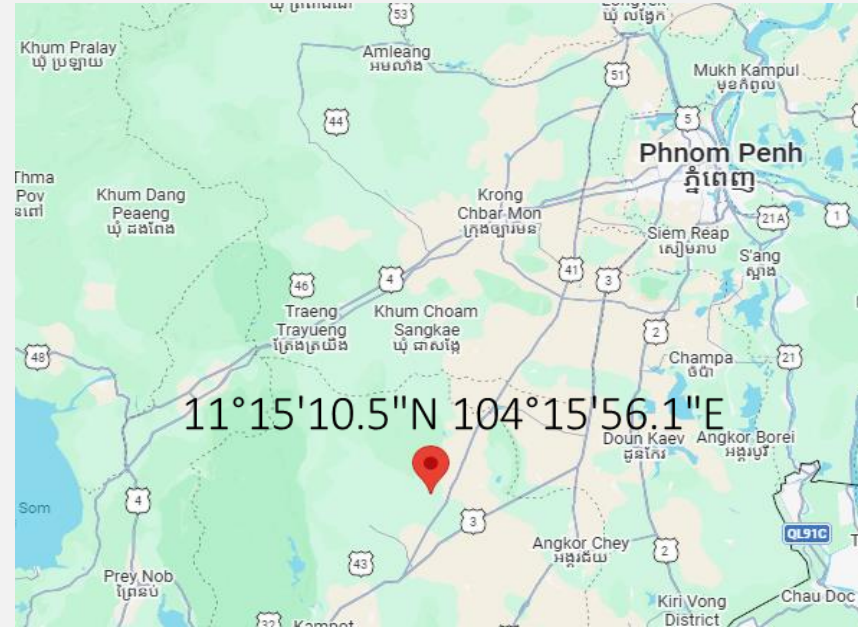
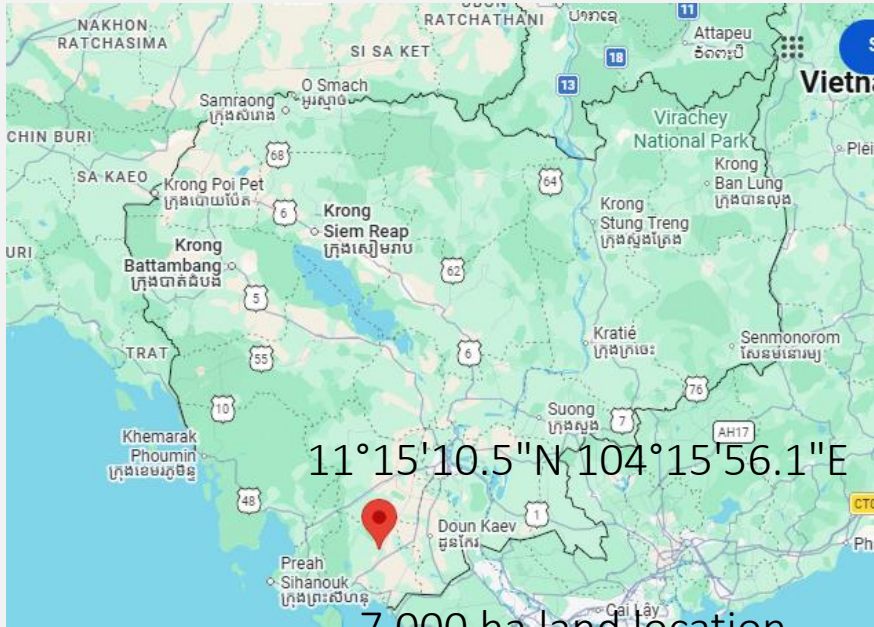
# PROJECTS PROPOSED

- 1- Commercial Area
- 2- Japanese village Area
- 3- Shopping Mall Area
- 4- Hospital and Clinic Area
- 5- Hotel and Office Building
- 6- Light Industrial Zone
- 7- Theme Park
- 8- Golf Course
- 9- Agriculture Park
- 10- Solar Power Farm
- 11- Grape Farm & Winery
- 12- Eco Green house
- 13- Fresh Produce Farm
- 14- Fruit Plantation
- 15- Soft & hard wood Plantation
- 16- Cassava Farming
- 17- Pig Farm
- 18- Poultry farm
- 19- Japonica Eel Farm
- 20- Cow Farm

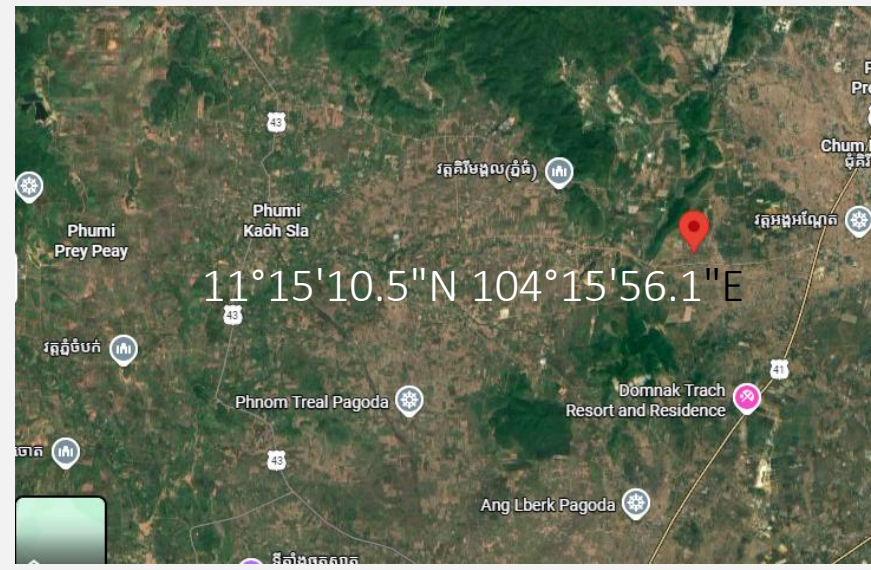
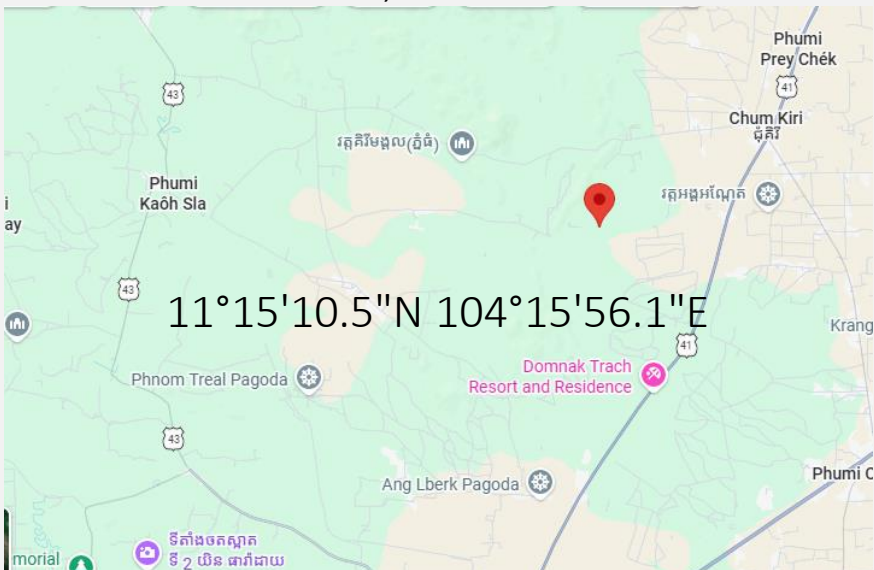
# KURIBARA ECO JAPANTOWN 7,000 HECTARES MAP SITE



# 11°15'10.5"N 104°15'56.1"E Land Location



Total Area of 7,000 hectares between the road # 43 and road #41 Kampong Speu Province.



# Land location entrance from national road #4



Entrance land site from National road #4 Phnom Penh to Sihanoukville exit on kilometer number 93

# Land location

10°53'54.5"N 104°22'31.1"E



7,000 hectares

- Land size : 7,000 hectare
- Address:
  - Commune yay mao  
Pich Nil, Treng  
Trayeoung, Dom Boke  
Roung, District Phnom  
Sruoch Kampong Speu  
Province Cambodia



Eucalyptus tree



# SOFT AND HARD WOOD TREE PLANTATION

(LAND RESERVED MORE THAN 2,000 HECTARES  
INSIDE THE VILLAGE)





# GREENHOUSE FOR FRUIT AND VEGETABLE

(LAND RESERVED MORE THAN 5 HECTARES  
NEARBY THE VILLAGE)





# GOLF COURSE

(LAND RESERVED MORE THAN 100 HECTARES NEARBY THE VILLAGE )

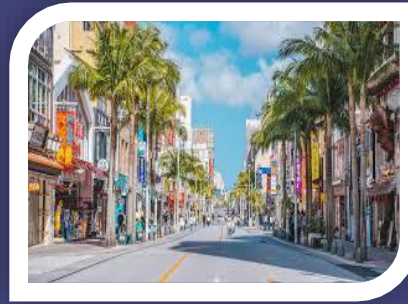




# LIGHT INDUSTRIAL PARK

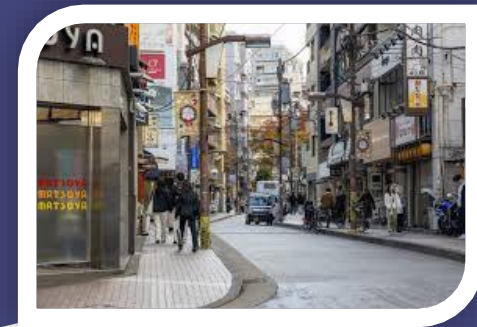
(LAND RESERVED MORE THAN 100  
HECTARES NEARBY THE VILLAGE )





# DOWNTOWN COMMERCIAL AREA

(LAND RESERVED MORE THAN 200  
HECTARES NEARBY THE VILLAGE )





# MINI MALL AND MARKET AREA

(LAND RESERVED MORE THAN 200  
HECTARES NEARBY THE VILLAGE )





# KURIBARA VILLAGE 1

(LAND RESERVED MORE THAN 100 HECTARES NEARBY THE VILLAGE )





## KURIBARA VILLAGE 2

(LAND RESERVED MORE THAN 100 HECTARES NEARBY THE VILLAGE )



# SPECIALIZE HOSPITAL

Specialize Hospital will be a first hospital's project in Cambodia, with the executive prime land area of 10 hectares development and overview of sea panorama, situated inside KURIBARA JAPANTOWN in KAMPONG SPEU Province Cambodia.

We proposed a new line of development for high standard international hospital project in Cambodia, by joint task development with MAY GLOBAL HEALTH LTD international hospital expert who know-how to develop and turnkey operation with management contract.



# SOLAR FARM



100 MW SOLAR POWER



THE GREEN ENERGY FOR KURIBARA JAPANTOWN





# GRAPE FARM & WINE PRODUCTION

(LAND RESERVED MORE THAN 400 HECTARES NEARBY THE VILLAGE )



# CASSAVA FARMING

## CASSAVA PROJECT

Land reserved 1,000 hectares



# CASSAVA BIO PRODUCTS

CASSAVA FACTORY PROJECT

Land reserved 1,000 hectares

Cassava processing plant  
PROJECT CASE



100% ECO FRIENDLY

SUSTAINABLE ORGANIC

DISSOLVES IN HOT WATER BIODEGRADABLE

40 x 50 cm

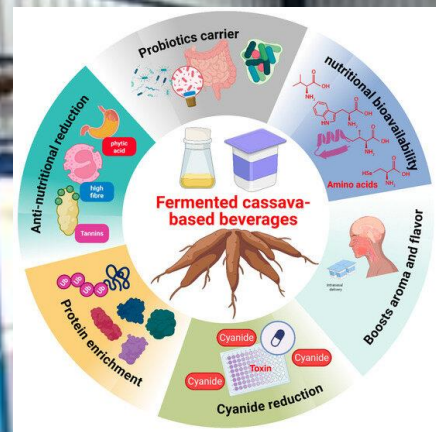
**Cassava Bio Degradable Bags**

30 BAGS

CHOOSE THE RIGHT TYPE OF CASSAVA BAG

Cassava Bag Water Resistant

Cassava Bag Water Dissolve





# Fruit Plantation





Green House Produce





# Agriculture



# Soft and Hard Wood Plantation





# PIG FARM

(LAND RESERVED MORE THAN 5 HECTARES  
NEARBY THE VILLAGE )





# CHICKEN FARM

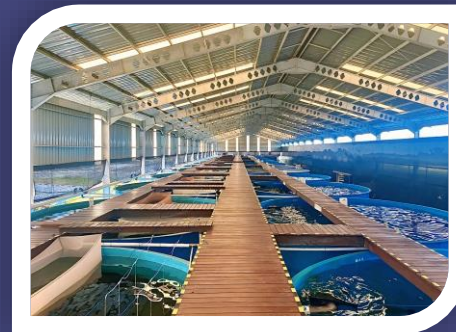
(LAND RESERVED MORE THAN 10 HECTARES  
NEARBY THE VILLAGE )





# JAPONICA EEL FARM

(LAND RESERVED MORE THAN 5 HECTARES  
NEARBY THE VILLAGE )







Land Condition  
7,000.Hectare Plus









Land Condition  
7,000.Hectare Plus



# Thank You

-  TATSUO KURIBARA
-  350 0064
-  [t.kuribara@golf-hs.com](mailto:t.kuribara@golf-hs.com)
-  [www.golf-hs.com](http://www.golf-hs.com)